



# Madison Parks Division

210 Martin Luther King, Jr. Blvd., Room 104  
Madison, WI 53703  
608-266-4711 • [cityofmadison.com/parks](http://cityofmadison.com/parks)



April 5, 2017

## NOTICE OF ADDENDUM ADDENDUM 1

CONTRACT NO. 7927

Revise and amend the contract document(s) for the above project as stated in this addendum, otherwise, the original document shall remain in effect.

### SPECIAL PROVISIONS:

Remove & replace BID ITEM 90002. The revised BID ITEM 90002 is listed, below.

### **BID ITEM 90002 – POURED-IN-PLACE PLAYGROUND SURFACING**

#### DESCRIPTION

This bid item shall be performed by a Contractor prequalified in Category 399: Poured-In-Place Playground Surfacing Installer. This item shall include all necessary work, labor and incidentals required to obtain, receive, store, transport and install aliphatic rubber poured-in-place playground surfacing.

Poured-in-place playground surfacing shall be either of the two products described below or Approved Equal.

- PlayBound Poured-In-Place applied using aliphatic urethane as manufactured by Surface America (P.O. Box 157, Williamsville NY 14231 (716) 632-8413 or (800) 999-0555 [www.surfaceamerica.com](http://www.surfaceamerica.com))
- No Fault® Poured-In-Place safety surfacing product as manufactured by No Fault Sport Group, LLC (3112 Valley Creek Drive, Suite C Baton Rouge, LA 70808; (225) 215-7760 or (866) 637-7678; [info@nofault.com](mailto:info@nofault.com); [nofault.com](http://nofault.com))

Proposed playground surfacing products must meet the following criteria:

- must carry a minimum ten (10) year limited warranty;
- must carry IPEMA Certification to ASTM F1292 standard for critical fall heights;
- surface / wear layer shall consist of recycled post-industrial Ethylene Propylene Diene Monomer (EPDM) rubber composed of 50% bright green and 50% black colors
- basemat or cushion base shall be post-consumer recycled Styrene Butadiene Rubber (SBR) no less than 3.5" applied depth

Contractor shall order surfacing material for delivery from the proposed poured-in-place rubber vendor to the Contractor's pre-determined receiving location. The Contractor shall provide equipment and labor for loading, trucking and off-loading as needed. Contractor is responsible for

securing all deliveries and insuring the completeness of the poured-in-place playground surfacing order prior to installation.

The poured-in-place playground surfacing shall be installed per the manufacturer's installation instructions to a depth of 4" for the entire playground surface, to include ½" of surface/wear layer and 3.5" of cushion base. Quantities identified in the proposal page have been calculated for installation of four (4) inches of poured-in-place rubber surfacing.

Double handling, stockpiling and placing poured-in-place surfacing shall be incidental to this bid item.

### **METHOD OF MEASUREMENT**

Poured-In-Place Playground Surfacing shall be measured by the square foot quantity as listed in the proposal page without measurement thereof.

### **BASIS OF PAYMENT**

Poured-In-Place Playground Surfacing shall be measured as described above and shall be paid for at the contract unit price which shall be full compensation for all work, labor, tools, equipment, and incidentals required to complete the work as set forth in the description.

### **PROPOSAL:**

Action	Bid Item	Description	Original Quantity	New Quantity
REMOVE	20314	REMOVE PIPE	55 L.F.	0 L.F.
ADD	50762	SADDLED INLET TYPE II	0	1 EA
REMOVE	50792	STORM SEWER TAP	1 EA	0 EA

### **PLAN SET:**

Remove & replace Sheet 1.2 and Sheet 1.5 to reflect addition of saddled inlet and plugged pipe to remain.

### **CLARIFICATION:**

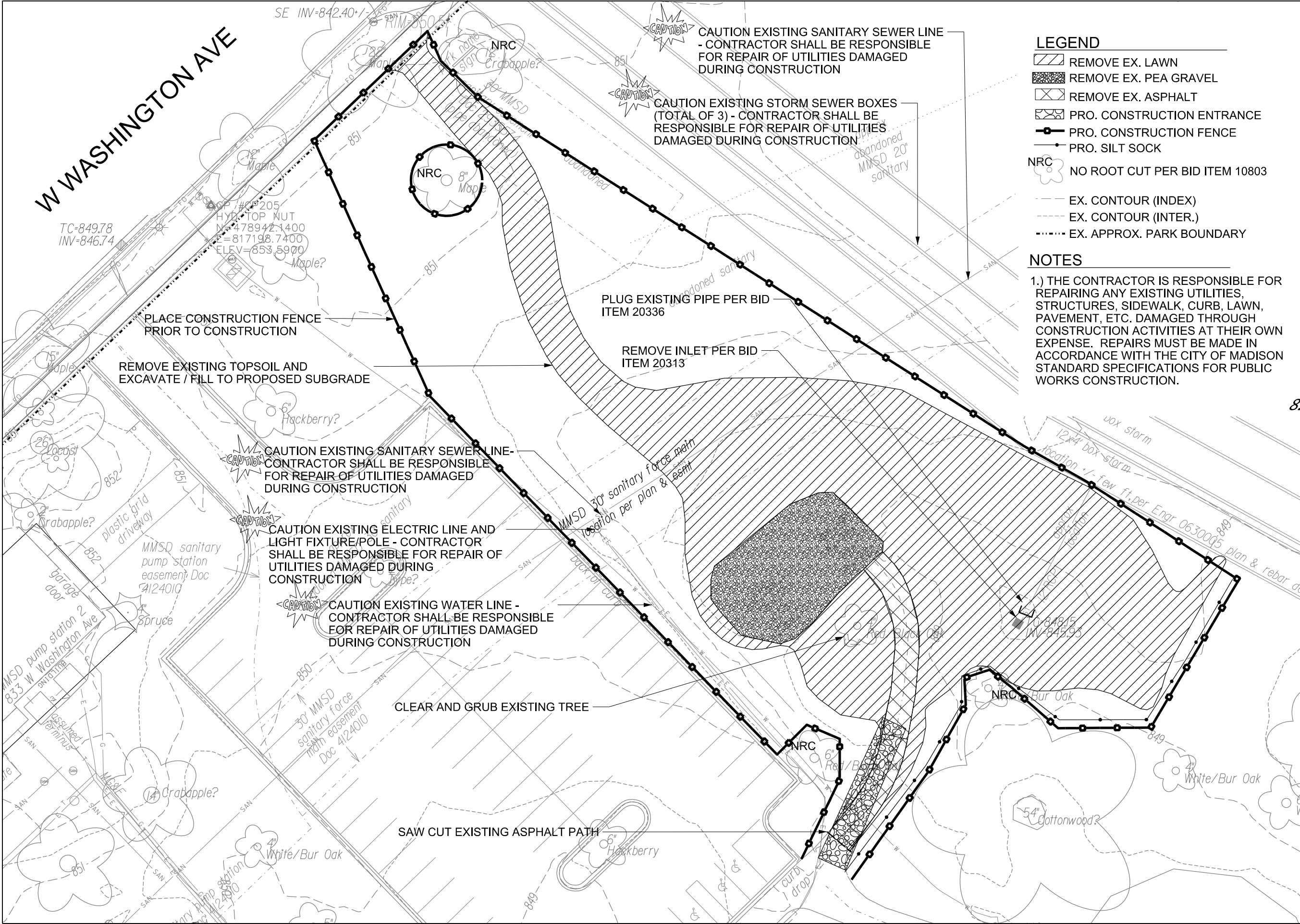
An additional poured-in-place playground surfacing product has been determined to be an "Approved Equal" based on submittals from the surfacing manufacturer. Saddled inlet treatment over existing box culvert is preferred method to avoid surcharge to the site from existing high water level in box culvert.

Electronic version of these documents can be found on the Bid Express web site at:

<http://www.bidexpress.com>

If you are unable to download plan revisions associated with the addendum, please contact the Engineering office at 608-266-4751 receive the material by another route.

for   
Eric Knepp, Parks Superintendent



LEGEND

- REMOVE EX. LAWN
- REMOVE EX. PEA GRAVEL
- REMOVE EX. ASPHALT
- PRO. CONSTRUCTION ENTRANCE
- PRO. CONSTRUCTION FENCE
- PRO. SILT SOCK
- NRC NO ROOT CUT PER BID ITEM 10803

- EX. CONTOUR (INDEX)
- EX. CONTOUR (INTER.)
- EX. APPROX. PARK BOUNDARY

NOTES

1.) THE CONTRACTOR IS RESPONSIBLE FOR REPAIRING ANY EXISTING UTILITIES, STRUCTURES, SIDEWALK, CURB, LAWN, PAVEMENT, ETC. DAMAGED THROUGH CONSTRUCTION ACTIVITIES AT THEIR OWN EXPENSE. REPAIRS MUST BE MADE IN ACCORDANCE WITH THE CITY OF MADISON STANDARD SPECIFICATIONS FOR PUBLIC WORKS CONSTRUCTION.

City of Madison  
Department of Public Works  
PARKS DIVISION

City-County Building, Suite 104  
210 Martin Luther King, Jr. Blvd.  
Madison, WI 53703

play  
MADISON  
PARKS

Graphical Scale  
0 30 ft N

PROJECT: 2017  
BRITTINGHAM  
PARK  
ACCESSIBLE  
PLAYGROUND

BRITTINGHAM PARK  
829 W WASHINGTON AVE  
MADISON, WI 53715

Although every effort has been made in preparing these plans and checking them for accuracy, the contractor and subcontractors must check all details and dimensions of their trade and be responsible for the same.

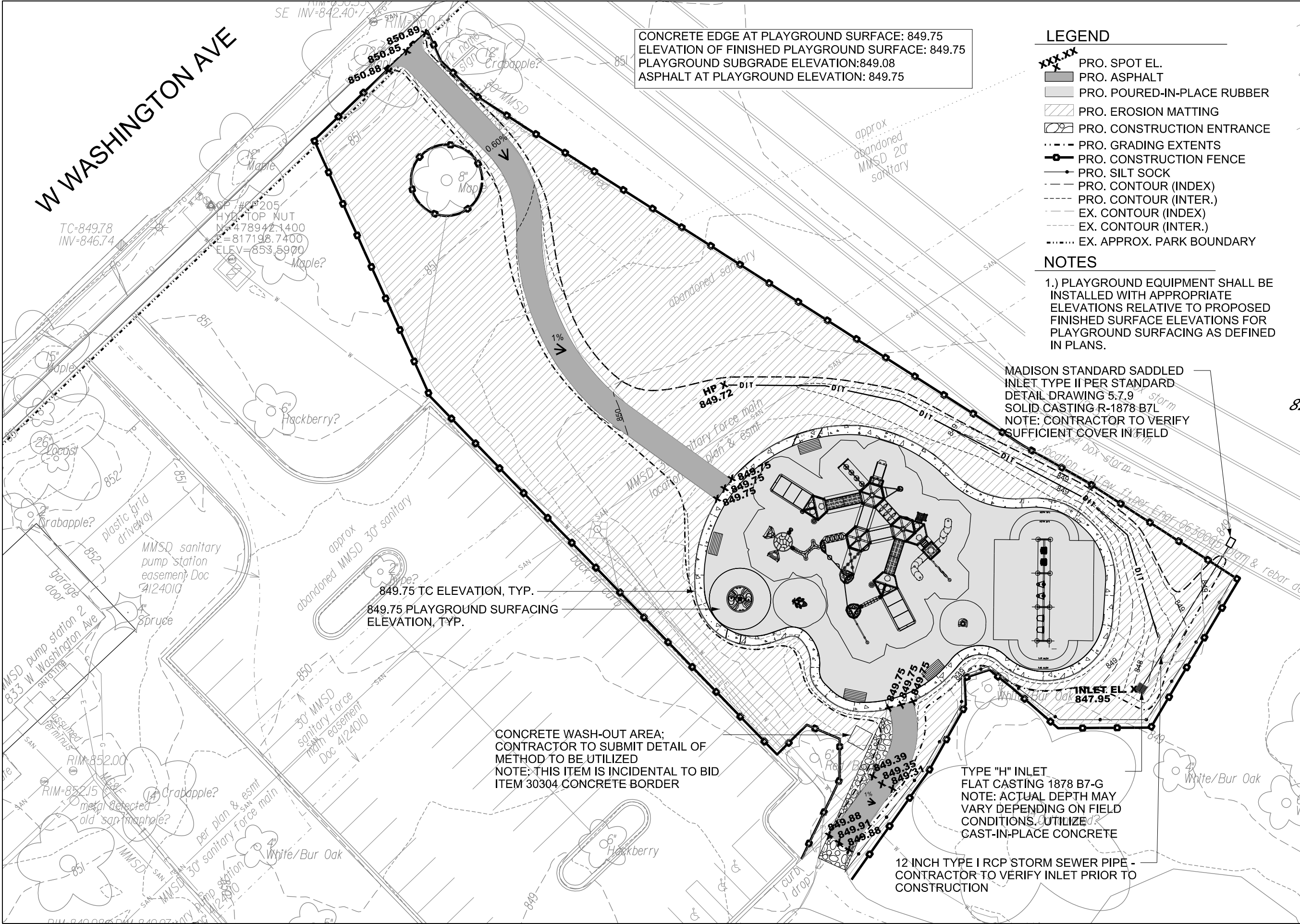
ITEM	DATE
Drawn by: KK	04-05-2017
Approved by:	XX-XX-XXXX

PUBLIC WORKS PROJECT #:  
7927

SHEET TITLE:  
DEMOLITION AND  
PROTECTION PLAN

SHEET NUMBER:  
1.2





City of Madison  
Department of Public Works  
**PARKS DIVISION**  
City-County Building, Suite 104  
210 Martin Luther King, Jr. Blvd.  
Madison, WI 53703

*play*  
**MADISON  
PARKS**

Graphical Scale  
0 30 ft  
N

PROJECT: **2017  
BRITTINGHAM  
PARK  
ACCESSIBLE  
PLAYGROUND**

**BRITTINGHAM PARK  
829 W WASHINGTON AVE  
MADISON, WI 53715**

Although every effort has been made in preparing these plans and checking them for accuracy, the contractor and subcontractors must check all details and dimensions of their trade and be responsible for the same.

ITEM	DATE
Drawn by: KK	04-05-2017
Approved by:	XX-XX-XXXX

PUBLIC WORKS PROJECT #:  
**7927**

SHEET TITLE:  
**GRADING AND  
EROSION CONTROL  
PLAN**  
SHEET NUMBER:

**1.5**